



Mapping in the Dessie area (1985)



Inventory of hot springs in the Lake Shalla area



River flow measurements (1982)



Salt mining in Chew Bet



Measurements of physical and chemical characteristics of the Birbir River, Wollega



Measurements of masonry pollution in Synthesia company in Usti upon Labe (Czech Republik)



Inventory of springs in the Upper Awash for Addis Ababa hydrogeological map



Inventory of Sof Omar karst cave for compilation of Megalo hydrogeological map



Inventory of local water holes in the Negele area



Drilling for drinking water supply project in the Sidama Zone



Geophysical exploration for well siting



Pumping test in Hantete, Loka Abaya



Study of giant lands slides in the Debre Sina area



Sink hole near Sof Omar village for database of geo-hazards



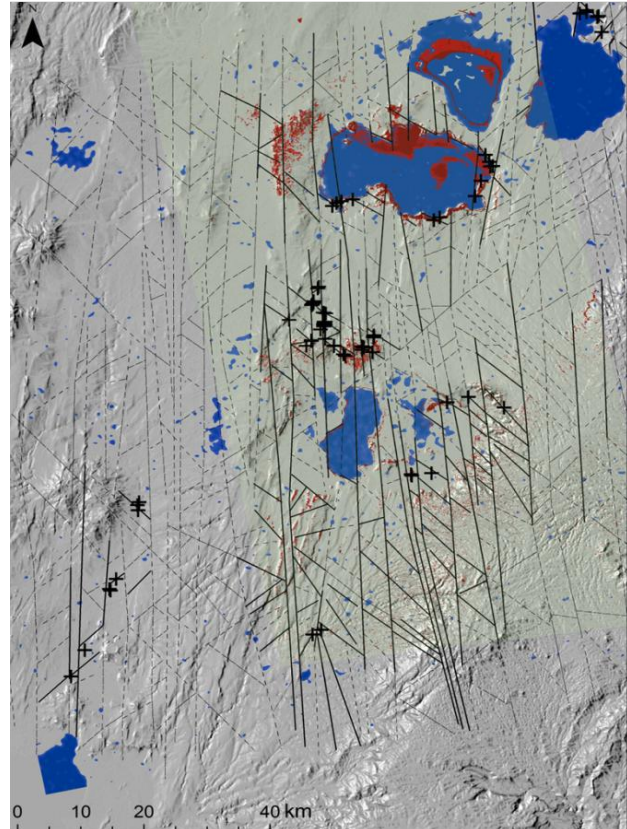
Engineering geology of the Addis Ababa Sheet (ignimbrite and paleo-soil at Debre Zeit road)



Engineering geology investigation for construction of new Czech embassy in the Kebele 22 area



Documenting ground cracks in the Hawassa area geo-hazard map (sub-sheet 0738-C4 )



Structural study (Landsat/ Aster) for geo-hazard and hydrogeological maps Hosaina and Dila sheets



Presentation of study on thermal and mineral waters in the central part of the Rift valley (Addis Ababa University)



Workshop in remote sensing in Geological Survey of Ethiopia (Landsat/ENVI SW)



Construction of seismic station in Shashemene



Training in groundwater monitoring near Budweiser, Czech Republic



Training in river flow measurements for post-gradual students of Addis Ababa University



Rainbow in the Welwel area, mapping in the Somali region